

TURBO ACTION

1535 Owens Road, Jacksonville, FL 32218
Phone (904)741-4850 *** FAX (904)741-4853

CHEETAH COMPETITION WITH AUTOMATIC 1-2 SHIFT

Part #23254

Turbo Hydro "350" 1969-80 (Non-Lockup) PRN321

Installation Instructions

FIRST, READ INSTRUCTIONS CAREFULLY, THEN PROCEED TO INSTALL VALVE BODY BY FOLLOWING EACH STEP INDIVIDUALLY.

Kit Includes:	1	-	Valve Body	
	1	-	23093	Special Valve Body Spacer Plate
	1	-	23096	2-3 Performance Plate
	1	-	23097	Spacer to Valve Body Gasket (Small)
	1	-	23098	Spacer to Case Gasket (Large)
	1	-	23099	Pan Gasket
	1	-	23130	Modulator Plug
	1	-	23345	Governor Shift Point Kit

NOTE: Plate included in this kit will fit *all Turbo-Hydro "350" non-lockup transmissions even though it may not look the same as the plate presently in your transmission. Spacer Gaskets included in this kit must be used. Note will not fit Turbo "250".

- STEP #1: Transmission should be cool before installing. Also, place gear shift selector in neutral. If vehicle is on the ground, secure so it will not roll.
- STEP #2: Remove drain plug in pan and drain oil. Olds., Buick and Pontiac do not have drain plug, and therefore, must be drained by dropping transmission pan. Recommend leaving a couple of bolts attached until most of the oil has drained.
- STEP #3: Remove transmission oil filter by removing two screws. Be careful not to lose gasket.
- STEP #4: Remove kickdown valve wire by pulling pin out of kickdown lever in valve body (Fig. #1).
- STEP #5: Before removing valve body, note position of the gear shift linkage hooked to the valve body (Fig. #2). Remove 17 bolts from valve body. **CAREFULLY** lower valve body and at the same time slide angled shift pin lever from gear shift selector. **DO NOT** drop valve body or manual valve with angled shift pin.
- STEP #6: Holding spacer plate with your hand, remove spacer support plate bolts. **CAREFULLY** lower plate as there are four small teflon balls sitting on plate. Also, watch that the governor screen and oil pump screen do not fall out. These screens are located in case underneath the valve body spacer plate. See Fig. #3 & #4. Olds., Buick and Pontiac have two governor screens in rear of case, one in each passage. Chevy has only one governor screen.
- STEP #7: Sometimes the front servo will fall out when lowering the spacer plate in STEP #6. If so, be sure to reinstall per Fig. #5.

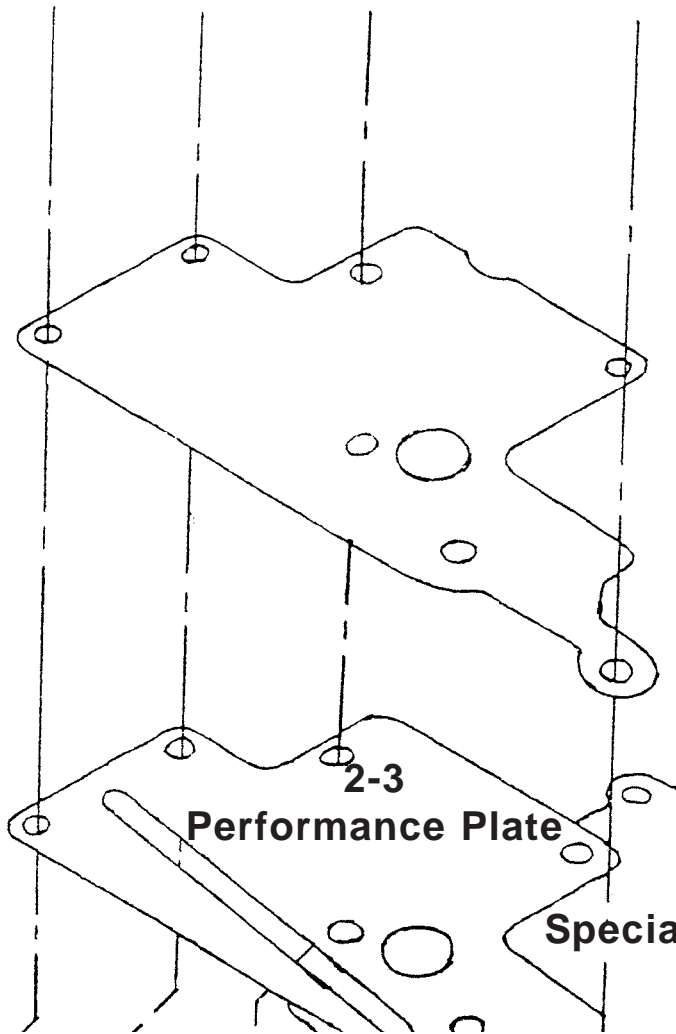
- STEP #8: Using vasoline, place oil pump screen and governor screen or screens into place.
- STEP #9: Install Special Valve Body Spacer Plate with Spacer to Case Gasket (large gasket). Use vasoline to hold ball in place on the new plate. Enclosed is a picture of the plate and the location of the teflon ball. Leave out teflon ball #1, 2, and 4. Carefully raise Special Valve Body Spacer Plate with Spacer to Case Gasket (large gasket) up into transmission with one hand and with the other hand, raise 2-3 Performance Plate into position. Note: 2-3 Performance Plate must go between Special Valve Body Spacer Plate and spacer support plate. Start all seven bolts in plate, but do not tighten as these bolts must be loose in order to line up valve body bolts. CAUTION: Be sure that the Spacer Support Plate has no rough edges. If it does, file smooth.
- STEP #10: Replace Manual Valve from old valve body and place into new Valve Body. Lift new Valve Body and Spacer to Valve Body Gasket (small gasket) up into place being sure to line up gear shift selector pin. Start all bolts making sure valve body is in its proper location. Tighten valve body bolts and spacer support plate bolts from the middle out. Tighten to 8-10 ft./lbs.
- STEP #11: Replace transmission oil filter with a Turbo Action #23008 filter back into transmission making sure that the holes in the filter line up with the valve body holes. **DON'T FORGET PAPER GASKET BETWEEN FILTER AND VALVE BODY.** Filter installed properly will have the word "Front" stamped on it (towards motor).
- STEP #12: Install a Turbo Action pan gasket, 23099 and bolt up the oil pan.
- STEP #13: Disconnect Vacuum Line to modulator. Remove modulator and install Modulator Plug supplied with valve body.
- STEP #14: Remove Governor Cover driver's side of vehicle.
- STEP #15: Remove Governor by pulling and turning counter clockwise.
- STEP #16: A good starting point is to install a #2 governor weight from kit.
- STEP #17: Adjust shift point by changing weights and springs. Weights approx. 400RPM springs approx. 100RPM per Step Fig. #6.
- STEP #18: Reinstall Governor by pushing in gently and turning clockwise.
- STEP #19: Reinstall Governor Cover.
- STEP #20: Refill transmission with a good brand of Dexron transmission fluid. Warm transmission up and place in all gears. Then check to make sure transmission level is on the add mark. Take vehicle out and drive 2-3 miles. Then recheck oil level. Add oil if necessary to bring to the full mark. **BUT NEVER FILL OVER THE FULL MARK.**

Teflon Ball Location



Figure #15

CAUTION: If Spacer Support Plate is not put back per drawing below, you will have a no reverse/no high gear condition, which means you didn't put Spacer Support Plate back.



**Spacer Support Plate
MUST BE REINSTALLED**

Fig. #6

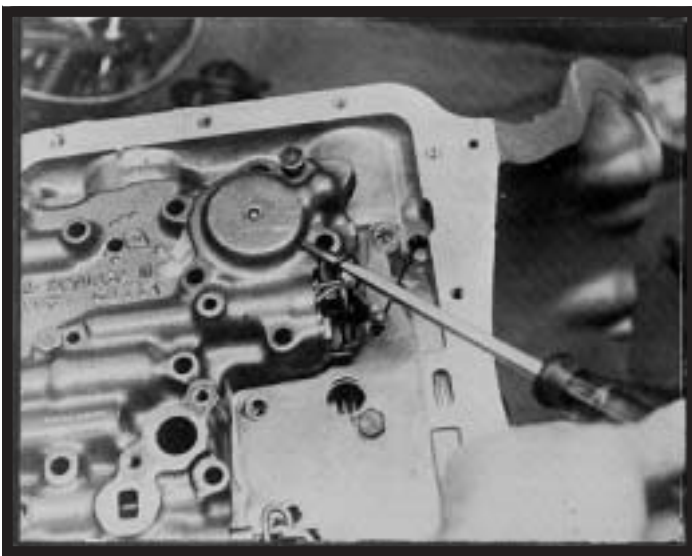


FIGURE #1
KICKDOWN ASSEMBLY

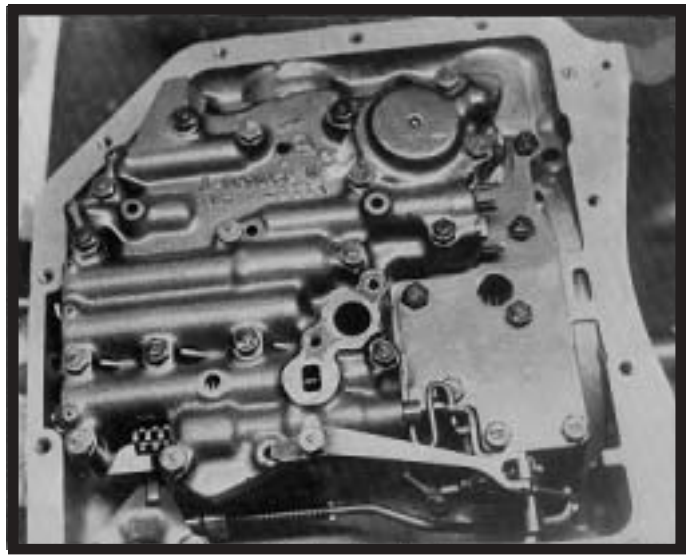


FIGURE #2
GEAR SHIFT LINKAGE

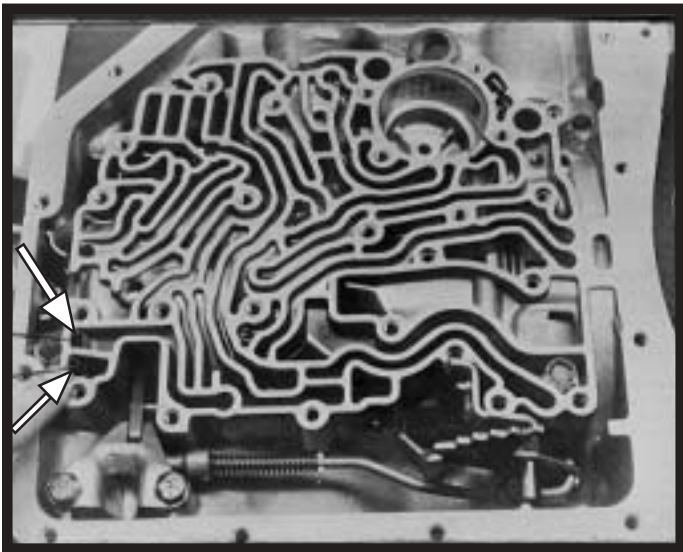


FIGURE #3
GOVERNOR SCREEN LOCATIONS

A - Chevy Only

A & B - Buick, Olds., Pontiac

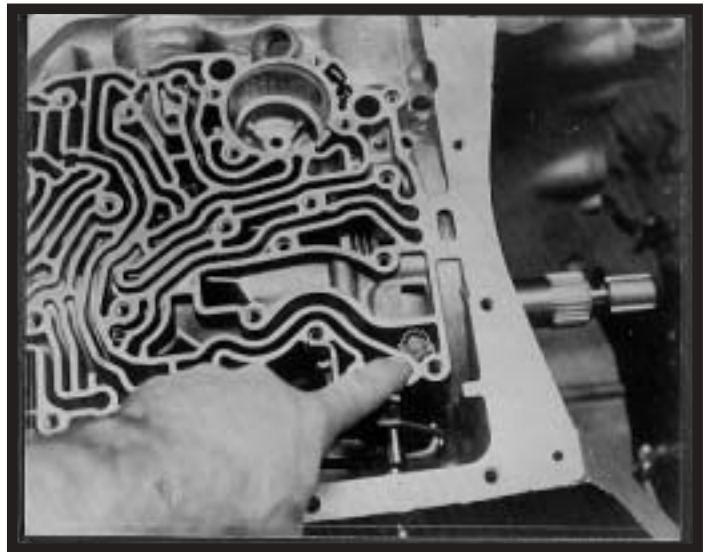


FIGURE #4
OIL PUMP SCREEN

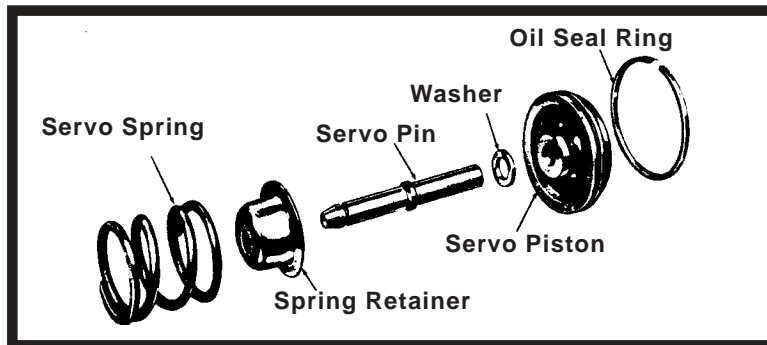


FIGURE #5

Sometimes the front servo will fall out when lowering the spacer plate in Step #6. If so, be sure to reinstall per above.

FIGURE #6

GOVERNOR WEIGHTS AND SPRING CHART

WEIGHTS

Heavy 1 2 3 4 5 6 Light

SPRINGS

Heavy Purple Blue Green Yellow Orange Red Light

SHIFT POINTS

