

# TURBO ACTION

1535 Owens Road, Jacksonville, FL 32218 Phone 904-741-4850\*\*\*\*Fax 904-741-4853  
www.turboaction.com

## CHEETAH STREET MANUAL/AUTOMATIC BODY (PRN321) Part #23250

**\*Turbo Hydro "350"  
1969-80 (Non-Lockup)**

FIRST, READ INSTRUCTIONS CAREFULLY, THEN PROCEED TO INSTALL VALVE BODY BY FOLLOWING EACH STEP INDIVIDUALLY.

Includes:	1	-	Valve Body	
	1	-	23093	Special Valve Body Spacer Plate
	1	-	23096P	2-3 Performance Plate
	1	-	23097	Spacer to Valve Body Gasket (Small)
	1	-	23098	Spacer to Case Valve Body Gasket (Large)
	1	-	23099C	Pan Gasket

NOTE: Plate included in this kit will fit \*all Turbo-Hydro "350" Non-Lockup transmissions even though it may not look the same as the plate presently in your transmission. Spacer Gaskets included in this kit must be used.

STEP #1: Transmission should be cool before installing. Also, place gear shift selector in neutral. If vehicle is on the ground, secure so it will not roll.

STEP #2: Remove drain plug in pan and drain oil. Olds., Buick and Pontiac do not have drain plug, and therefore, must be drained by dropping transmission pan. Recommend leaving a couple of bolts attached until most of the oil has drained.

STEP #3: Remove transmission oil filter by removing two screws. Be careful not to lose gasket.

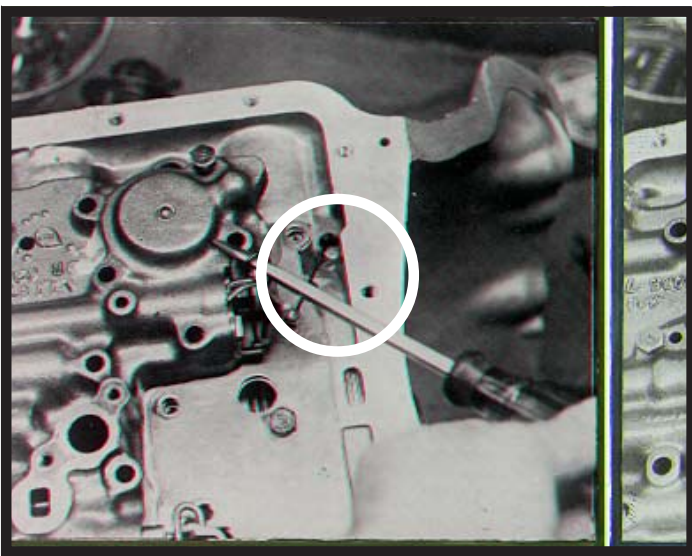
STEP #4: Remove kickdown valve wire by pulling pin out of kickdown lever in valve body. NOTE how these pieces are hooked up before removing (Fig. #1).

STEP #5: Before removing valve body, note position of the gear shift linkage hooked to the valve body (Fig. #2). Remove 18 bolts from valve body. CAREFULLY lower valve body and at the same time slide angled shift pin lever from gear shift selector. DO NOT drop valve body or manual valve with angled shift pin.

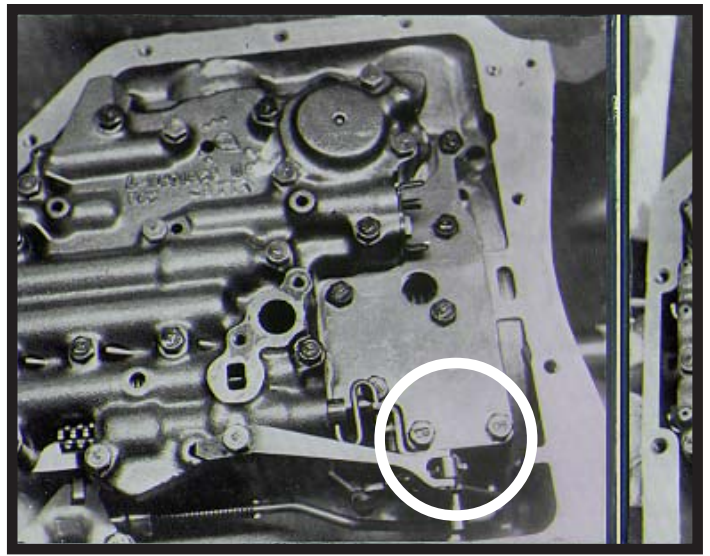
STEP #6: Holding stock valve body plate with your hand, remove spacer support plate bolts. CAREFULLY lower plate as there are four small teflon balls sitting on plate. Also, watch that the governor screen and oil pump screen do not fall out. These screens are located in case underneath the stock valve body spacer plate. See Figures #3 and #4. Olds., Buick and Pontiac have two governor screens in rear of case, one in each passage. Chevy has only one governor screen.

STEP #7: Sometimes the front servo will fall out when lowering the spacer plate in STEP #6. If so, be sure to reinstall per Fig. #5.

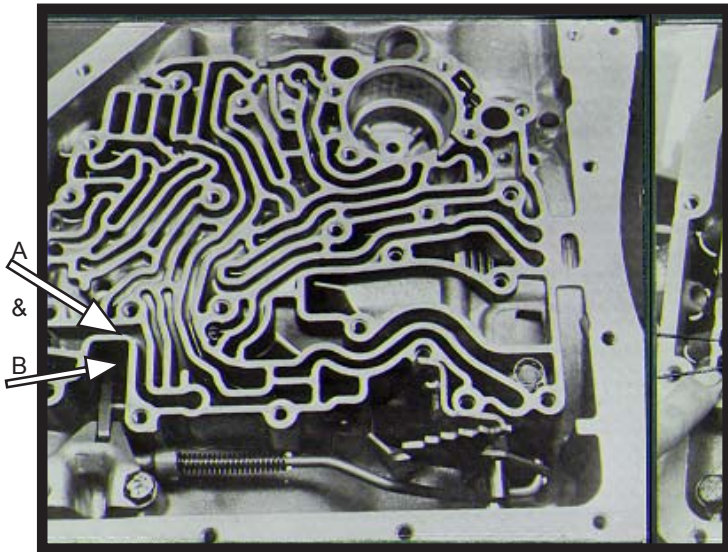
- STEP # 8: Using petroleum jelly, place oil pump screen into place.
- STEP # 9: Install Special Valve Body Spacer Plate #23093 with Spacer to Case Gasket #23098 (large gasket). Use petroleum jelly to hold balls in place on new plate. Enclosed is a picture of the plate and the location of the teflon balls, Fig. #6. Carefully raise Special Valve Body Spacer Plate with gasket up into transmission with one hand and with the other hand, raise 2-3 Performance Plate #23096P into position. Note: 2-3 Performance Plate must go between Special Valve Body Spacer Plate and Spacer Support Plate. Start all seven bolts in plate, but do not tighten as these bolts must be loose in order to line up valve body bolts. CAUTION: Be sure that the Spacer Support Plate has no rough edges. If it does, file smooth.
- STEP #10: Remove Manual Valve from old valve body and place into new Valve Body. Lift new Valve Body and Spacer to Valve Body Gasket (small gasket) up into place being sure to line up gear shift selector pin. Start all bolts making sure valve body is in its proper location. Tighten valve body bolts and spacer support plate bolts from the middle out. Tighten to 8-10 ft./lbs.
- STEP #11: Reinstall kickdown pin and kickdown lever. MAKE SURE these parts are located exactly like they were originally.
- STEP #12: Replace transmission oil filter with a Turbo Action #23008 filter back into transmission making sure that the holes in the filter line up with the valve body holes. DON'T FORGET PAPER GASKET BETWEEN FILTER & VALVE BODY. Filter installed properly will have the word "Front" stamped on it (towards motor).
- STEP #13: Install a Turbo Action pan gasket, #23099C and bolt up the oil pan. Refill transmission with a good brand of Dexron transmission fluid. Warm transmission up and place in all gears. Then check to make sure transmission level is on the add mark. Take vehicle out and drive 2-3 miles. Then recheck oil level. Add oil if necessary to bring to the full mark. BUT NEVER OVER THE FULL MARK.



**FIGURE #1**  
**KICKDOWN ASSEMBLY**



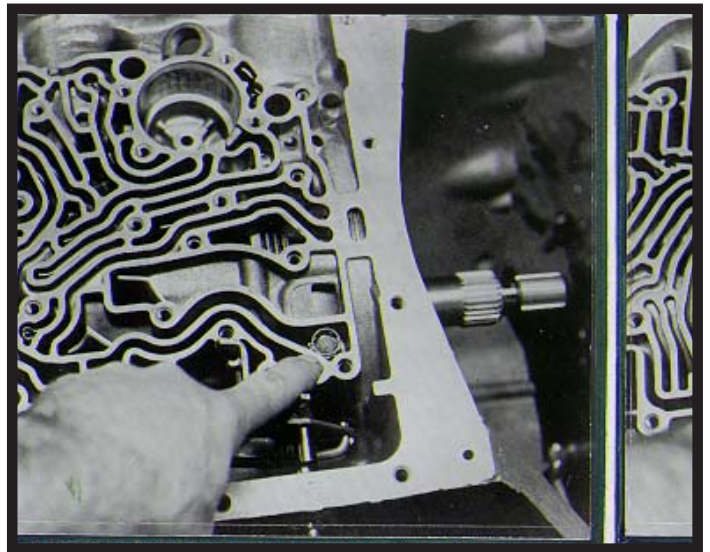
**FIGURE #2**  
**GEAR SHIFT LINKAGE**



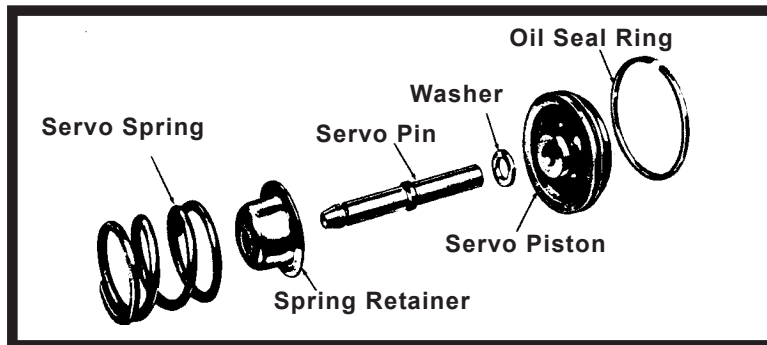
**FIGURE #3**  
**GOVERNOR SCREEN LOCATIONS**

A - Chevy Only

A & B - Buick, Olds., Pontiac



**FIGURE #4**  
**OIL PUMP SCREEN**



**FIGURE #5**

Sometimes the front servo will fall out when lowering the spacer plate in Step #6. If so, be sure to reinstall per above.

Teflon Ball Location

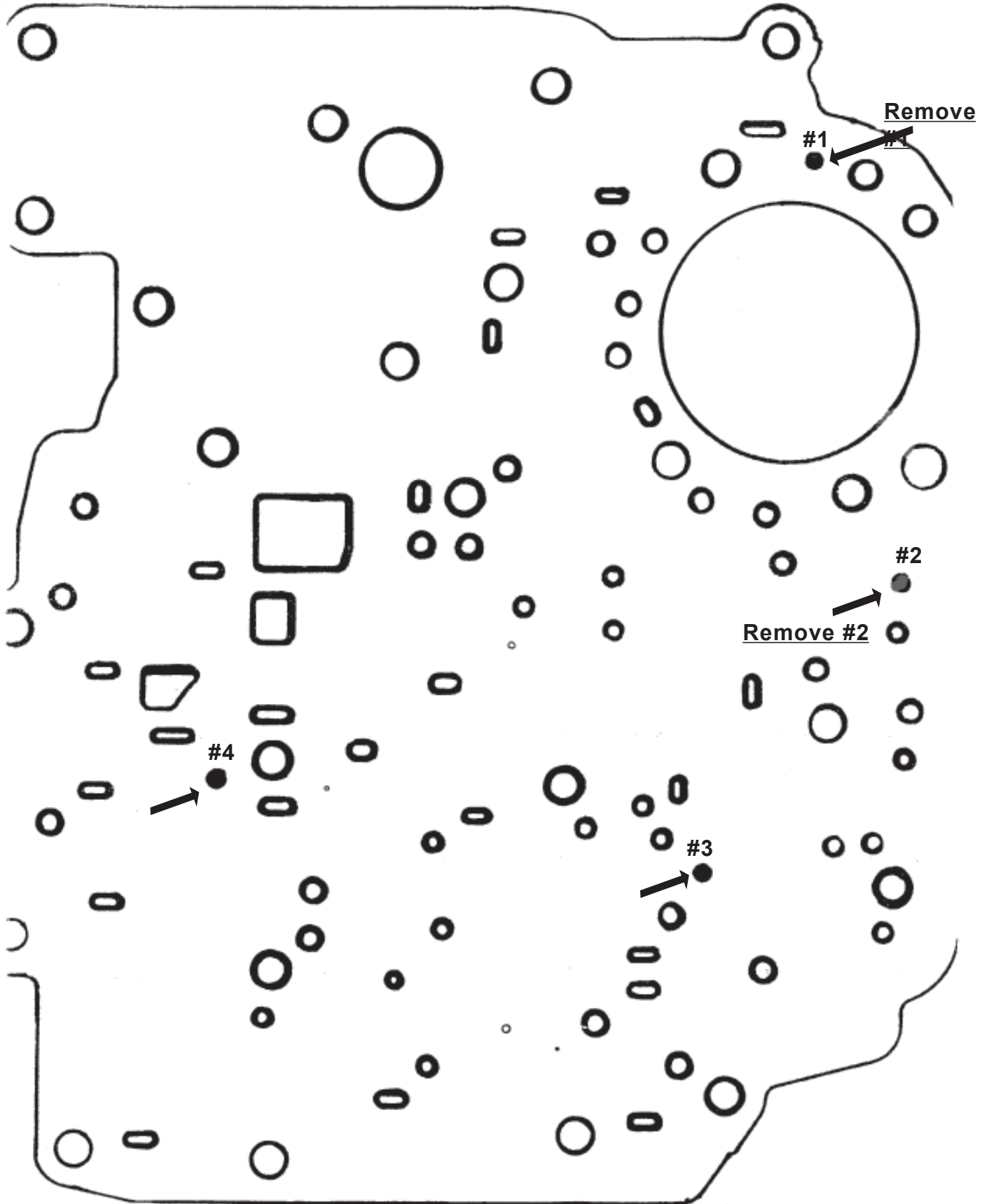
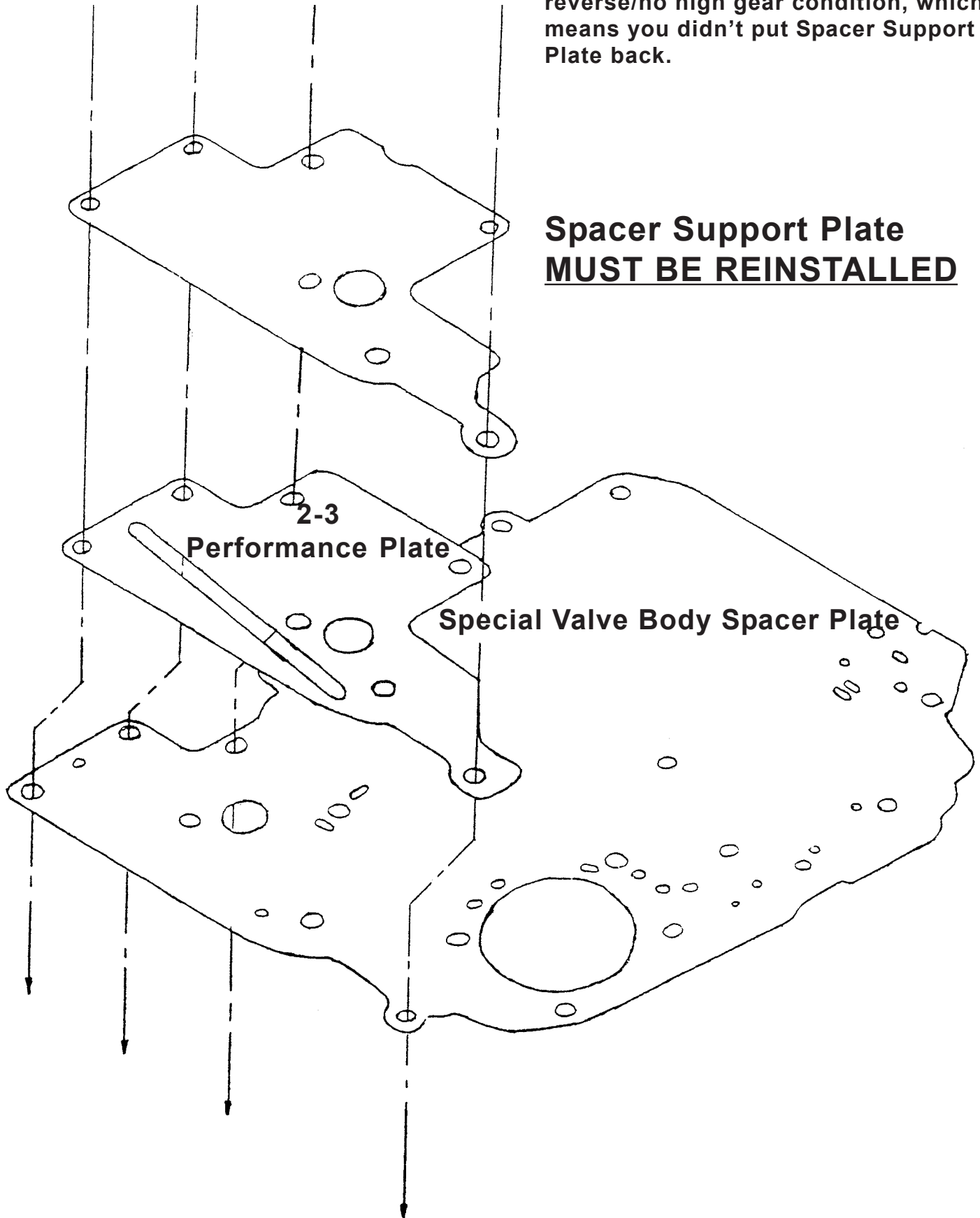


Figure #6

**CAUTION:** If Spacer Support Plate is not put back per drawing below, you will have a no reverse/no high gear condition, which means you didn't put Spacer Support Plate back.



**Spacer Support Plate  
MUST BE REINSTALLED**

